

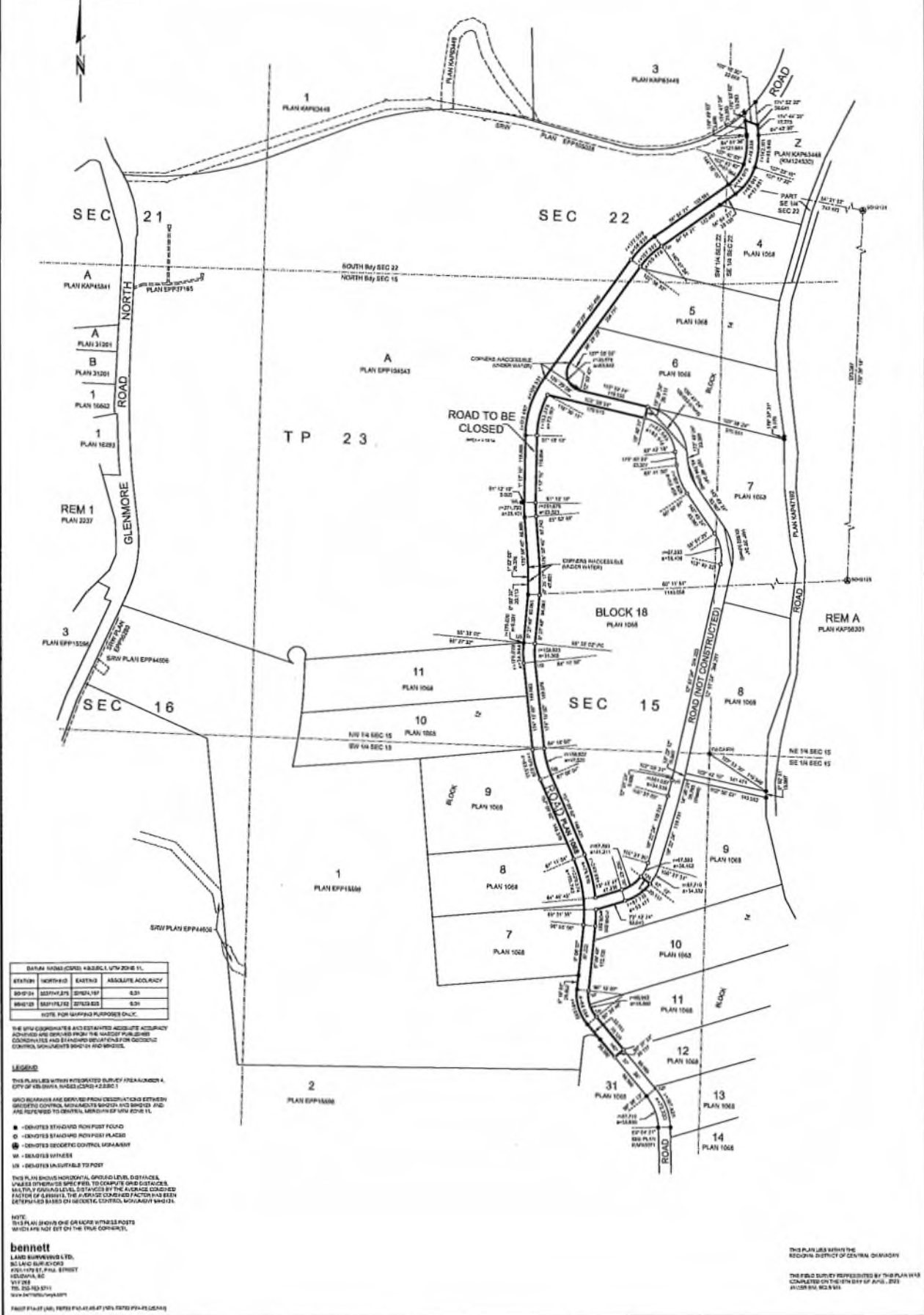
REFERENCE PLAN TO ACCOMPANY BYLAW NO 12550 (CITY OF KELOWNA)  
TO CLOSE PART OF ROAD DEDICATED ON PLAN 1068 SECTIONS 15 AND 22 TOWNSHIP 23  
OSOYOOS DIVISION YALE DISTRICT

PLAN EPP129760

PURSUANT TO SECTION 120 OF THE LAND TITLE ACT AND SECTION 40 OF THE COMMUNITY CHARTER,  
CITY OF KELOWNA  
BC08 826.093

SCALE 1:3000

ALL DIMENSIONS ARE IN METRES AND DECIMALS THEREOF.  
THE APPROXIMATE POSITION OF THIS PLAN IS 30-11-11  
WITHIN 5 METRES OF THE EAST OR WEST BOUNDARY OF THIS PLAN AS PLOTTED AT  
A SCALE OF 1:3000



DATA FROM (CSD) 488363.1 UTM ZONE 11			
STATION	NORTHING	EASTING	ABSOLUTE ACCURACY
SDPT01	527143.276	521541.187	0.31
SDPT02	527143.276	521541.187	0.31

NOTE: FOR MAPPING PURPOSES ONLY.

THE UTM COORDINATES AND ESTIMATED ABSOLUTE ACCURACY  
ADVERTISED ARE DERIVED FROM THE NAD83 PUBLISHED  
COORDINATES AND ESTIMATED ACCURACY FOR GEODETIC  
CONTROL MONUMENTS SDPT01 AND SDPT02.

**Legend**

- THIS PLAN IS WITHIN INTEGRATED SURVEY AREA UNDER A  
CITY OF KELOWNA, BRIDGE CROSSING 125501
- SPRO BOUNDARIES ARE DERIVED FROM COORDINATIONS BETWEEN  
SURVEYED CONTROL MONUMENTS SDPT01 AND SDPT02 AND  
ARE REFERRED TO CENTRAL MONUMENT OF UTM ZONE 11.
- - DENOTES STAKE/OD FROM FIRST ROAD
- - DENOTES STAKE/OD FROM FIRST PLACED
- ⊙ - DENOTES SECONDARY CONTROL MONUMENT
- W - DENOTES WITNESS
- IN - DENOTES INSURABLE TO POST

THIS PLAN SHOWS HORIZONTAL, GROUND LEVEL, DISTANCES,  
UNLESS OTHERWISE SPECIFIED, TO CORNER OR OTHER STAKES.  
MULTIPLE PLANNING LEVELS, DISTANCES BY THE AVERAGE CORRECTED  
FACTOR OF 0.999915. THE AVERAGE CORRECTED FACTOR HAS BEEN  
DETERMINED BASED ON GEODETIC CONTROL MONUMENT SDPT01.

NOTE:  
THIS PLAN SHOWS ONE OR MORE WITNESS POSTS  
WHICH ARE NOT SET BY THE TRUE CORNER(S).

**bennett**  
LAND SURVEYORS LTD.  
2140 BURNHAMTHORPE  
PO BOX 107, P.O. BOX 107  
KELOWNA, BC  
V1Y 2R6  
TEL: 250-863-5711  
WWW.BENNETTSURVEYORS.COM

THIS PLAN IS WITHIN THE  
REGIONAL DISTRICT OF CENTRAL OKANAGAN  
THE FIELD SURVEY REPRESENTED BY THIS PLAN WAS  
COMPLETED ON THE 17th DAY OF APRIL, 2013  
BY: BENNETT SURVEYORS LTD.

